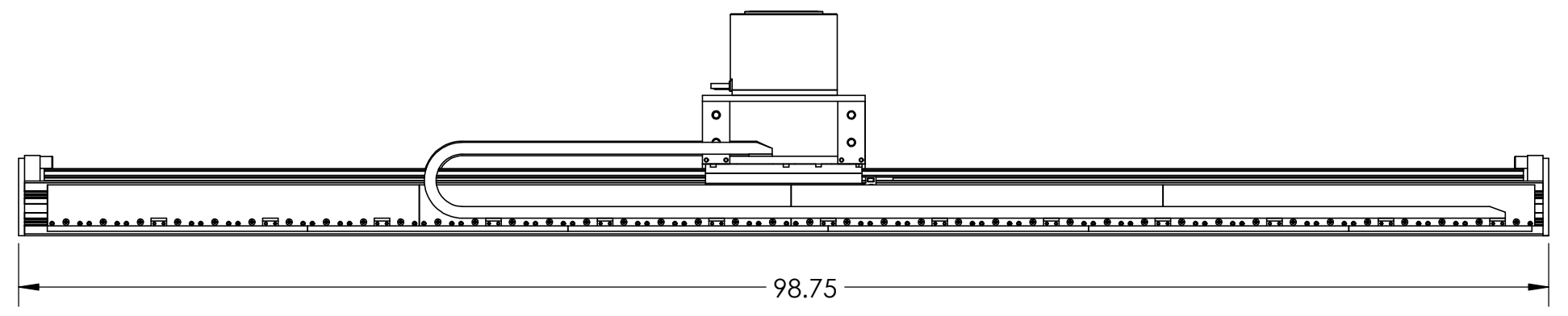
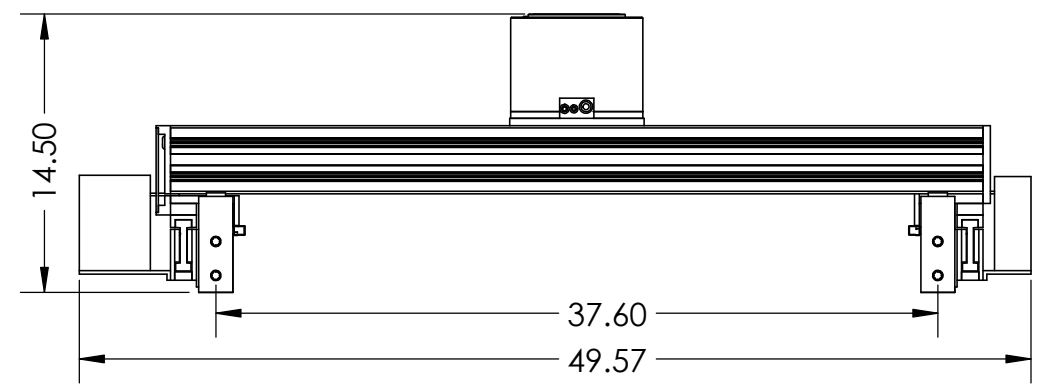
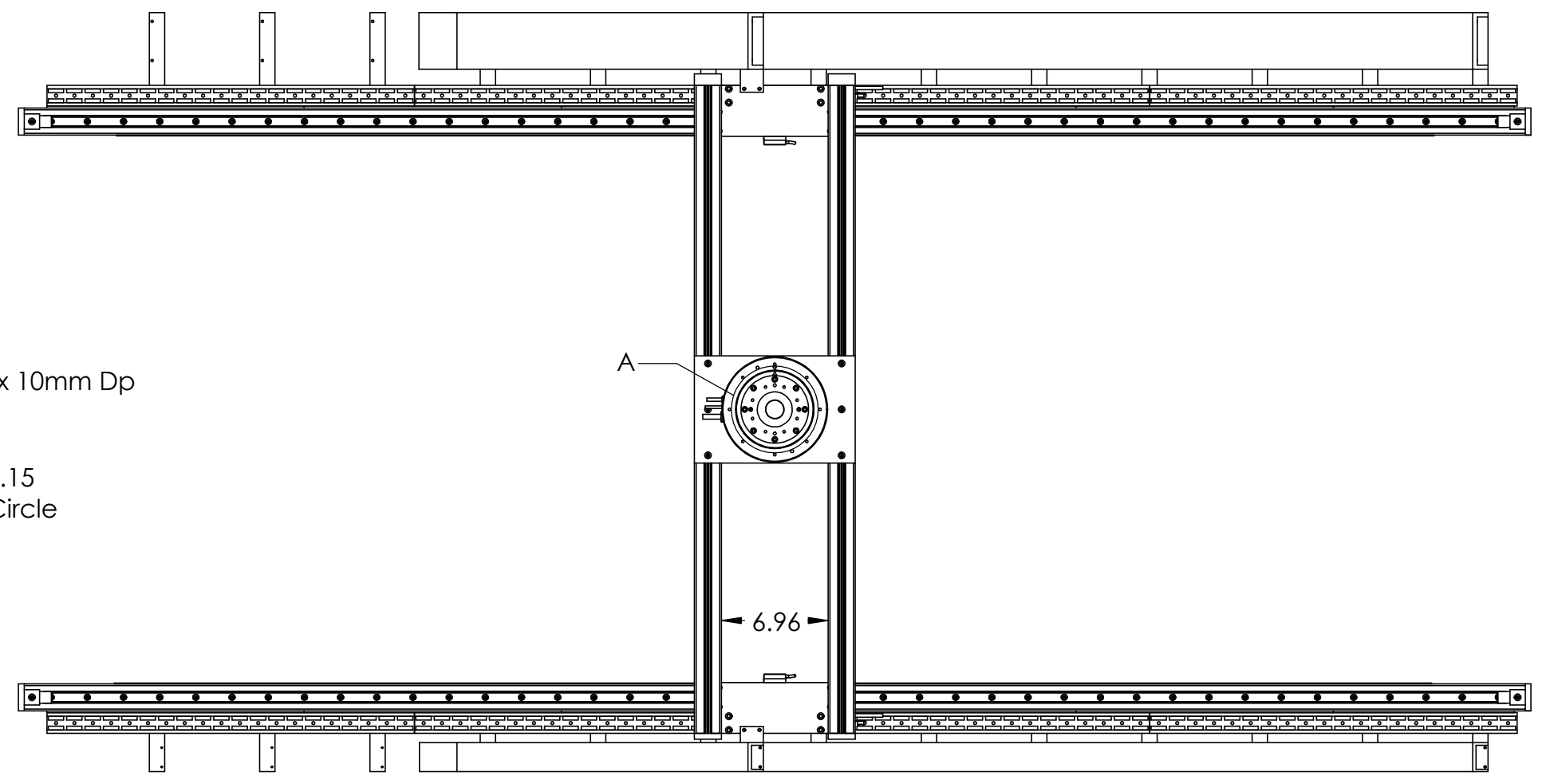
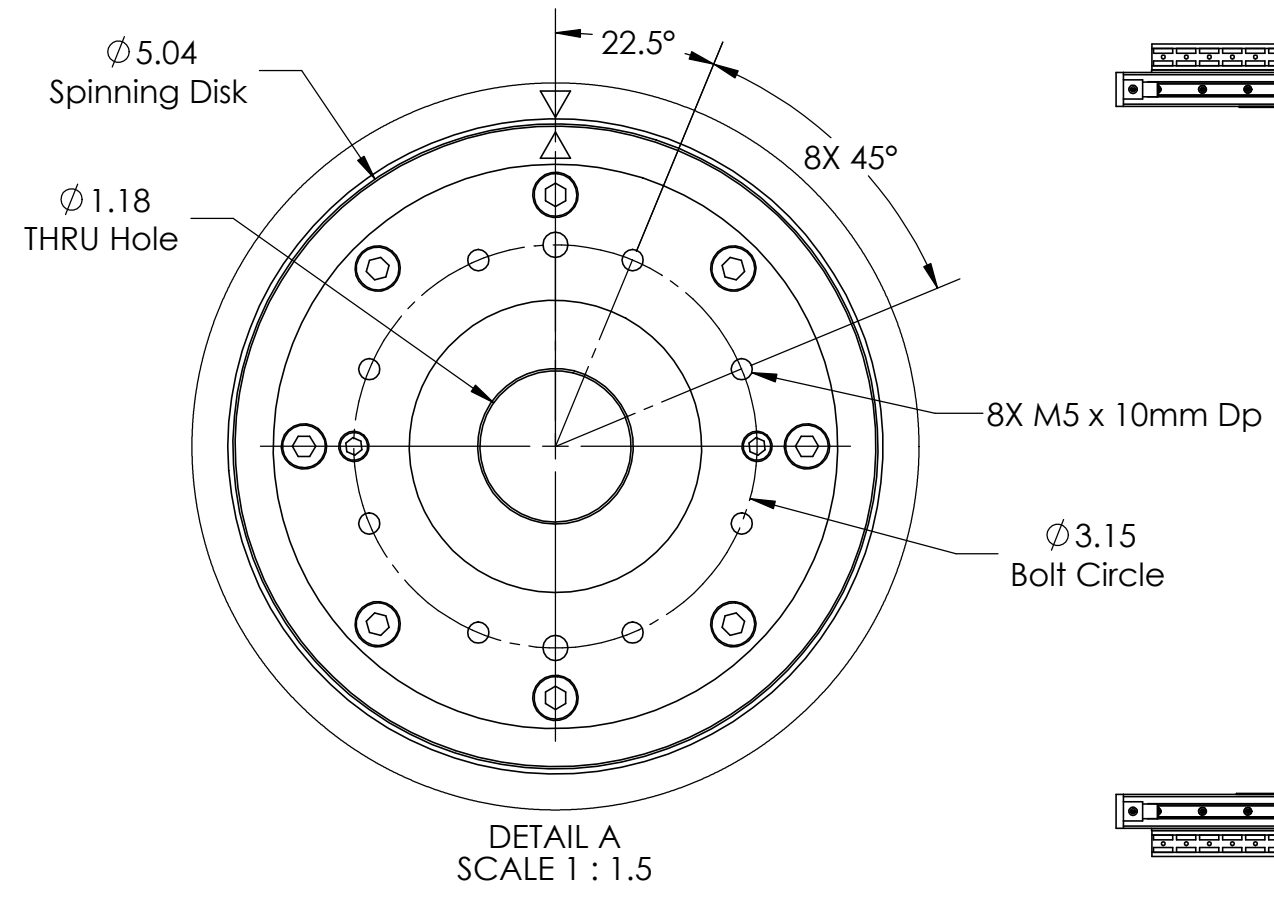
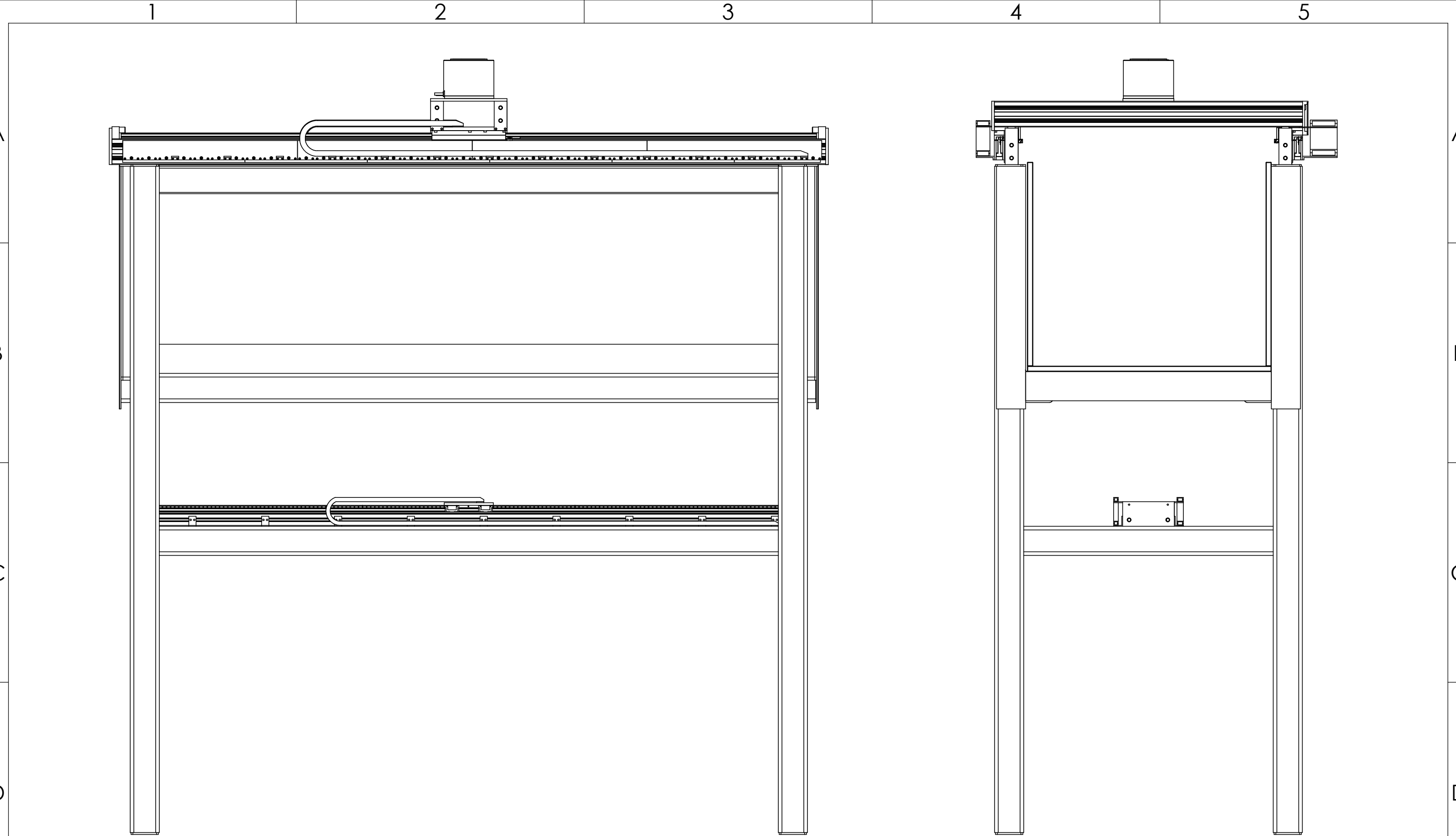


REVISION TABLE					
REV	ECN#	DESCRIPTION	REV BY	APPROVED	DATE
---	---	Original Drawing	OOG	MPW	1-26-17


Rotary Table Payload Mounting Plate



NOTES:  
- All Axis Shown at Mid-Stroke



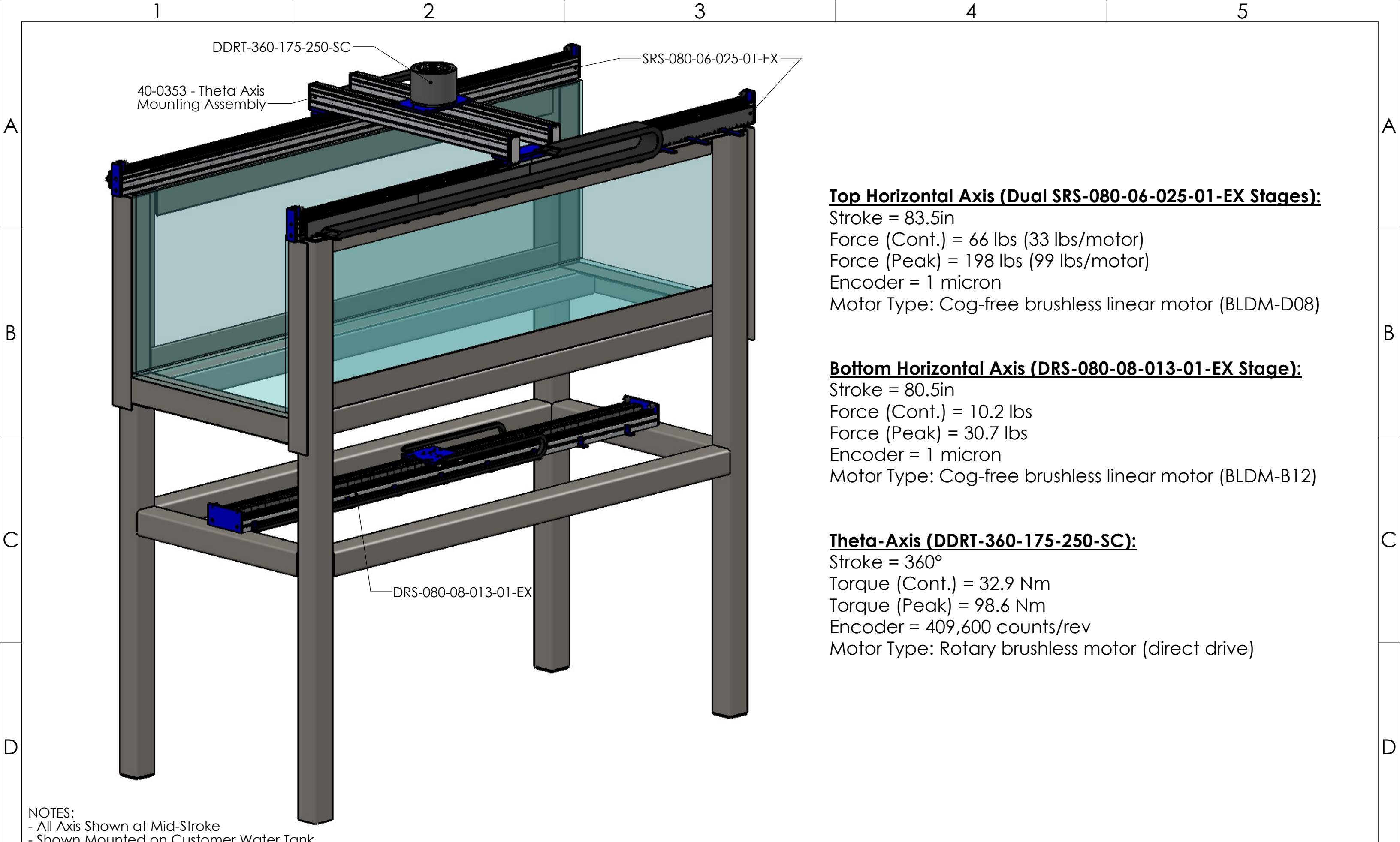
NOTES:  
 - All Axis Shown at Mid-Stroke  
 - Shown Mounted on Customer Water Tank

 <b>H2W Technologies, Inc.</b> Santa Clarita, CA 91350 USA	These drawings and specifications are the property of H2W Technologies, Inc. They are issued in confidence and shall	UNLESS SPECIFIED OTHERWISE: All dimensions are in inches Standard Tolerances are as follows	<b>FOR          REFERENCE          ONLY</b>
	<b>SOLIDWORKS Educational Product. For Instructional Use Only.</b>		

MATERIAL	
FINISH	

TITLE	Linear Motor - Theta Gantry
-------	-----------------------------

DWG #	<b>40-0380</b>
REV	----
DATE	3-20-17
SHEET	2 of 3



DDRT-360-175-250-SC  
 40-0353 - Theta Axis Mounting Assembly  
 SRS-080-06-025-01-EX

DRS-080-08-013-01-EX

**Top Horizontal Axis (Dual SRS-080-06-025-01-EX Stages):**

Stroke = 83.5in  
 Force (Cont.) = 66 lbs (33 lbs/motor)  
 Force (Peak) = 198 lbs (99 lbs/motor)  
 Encoder = 1 micron  
 Motor Type: Cog-free brushless linear motor (BLDM-D08)

**Bottom Horizontal Axis (DRS-080-08-013-01-EX Stage):**

Stroke = 80.5in  
 Force (Cont.) = 10.2 lbs  
 Force (Peak) = 30.7 lbs  
 Encoder = 1 micron  
 Motor Type: Cog-free brushless linear motor (BLDM-B12)

**Theta-Axis (DDRT-360-175-250-SC):**

Stroke = 360°  
 Torque (Cont.) = 32.9 Nm  
 Torque (Peak) = 98.6 Nm  
 Encoder = 409,600 counts/rev  
 Motor Type: Rotary brushless motor (direct drive)

NOTES:  
 - All Axis Shown at Mid-Stroke  
 - Shown Mounted on Customer Water Tank